

# PSYCH OUT

February 2007 Volume 6, No. 1

The Newsletter of the East Side Institute  
for Group and Short Term Psychotherapy  
[www.eastsideinstitute.org](http://www.eastsideinstitute.org)

## CREATIVE MALADJUSTMENT

In September 1967, three years after he received the Nobel Peace Prize and less than a year before he was assassinated, Dr. Martin Luther King, Jr. delivered a keynote speech to the annual convention of the American Psychological Association in Washington, D.C. I wanted to share an excerpt from that speech with you:

You who are in the field of psychology have given us a great word. It is the word maladjusted. It is good certainly [when it implies that] declaring that destructive maladjustment should be destroyed. But on the other hand, I am sure that we will recognize that there are some things in our society, some things in our world, to which we should never be adjusted. There are some things concerning which we must always be maladjusted if we are to be people of good will. We must never adjust ourselves to racial discrimination and racial segregation. We must never adjust ourselves to religious bigotry. We must never adjust ourselves to economic conditions that take necessities from the many to give luxuries to the few. We must never adjust ourselves to the madness of militarism, and the self-defeating effects of physical violence.

Thus, it may well be that our world is in dire need of a new organization, The International Association for the Advancement of Creative Maladjustment. Men and women should be as maladjusted as the prophet Amos, who in the midst of the injustices of his day, could cry out in words that echo across the centuries, 'Let justice roll down like waters and righteousness like a mighty stream'; or as maladjusted as Abraham Lincoln, who in the midst of his vacillations finally came to see that this nation could not survive half slave and half free; or as maladjusted as Thomas Jefferson, who in the midst of an age amazingly adjusted to slavery, could scratch across the pages of history, words lifted to cosmic proportions, 'We hold these truths to be self evident, that all men are created equal. That they are endowed by their creator with certain inalienable rights. And that among these are life, liberty, and the pursuit of happiness.' And through such creative maladjustment, we may be able to emerge from the bleak and desolate midnight of man's inhumanity to man, into the bright and glittering daybreak of freedom and justice.

Forty years later, the need for Dr. King's international association is greater than ever. And I do believe it is growing! It's my privilege to introduce a select few Advancers of Creative Maladjustment to you in the pages of this newsletter.

— Lois Holzman

## CREATIVE COLLABORATORS

Performance, improvisation and Lev Vygotsky are hot topics of conversation among these "advancers of creative maladjustment..."



**SALVADOR, BRAZIL:** Lois Holzman (l.) and West Coast Center for Social Therapy's Joyce Dattner with colleagues Gilberto Ramos and Ricardo Japiassu, both with the Universidade do Estado da Bahia-UNEB.



**ROSARIO, ARGENTINA:** Holzman and Dattner join professor Saul Fuks from the Universidad Nacional de Rosario and Centro de Asistencia a la Comunidad, CeAC psychologists and International Class alumnae Melina Lucila Baracco and Bibiana Colongo, and other CeAC therapists and trainees.



**SYDNEY, AUSTRALIA:** Institute faculty Carrie Lobman, Holzman and educational entrepreneur and researcher John Findlay, on the eve of "Transformational Tools" conference.



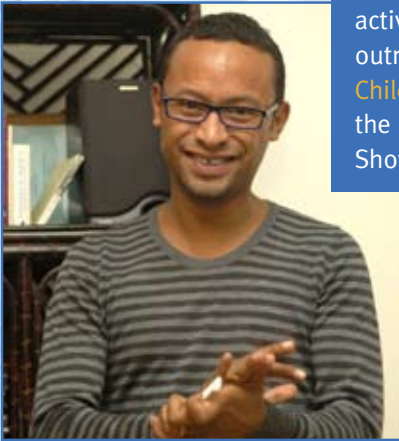
# Meet the International Class



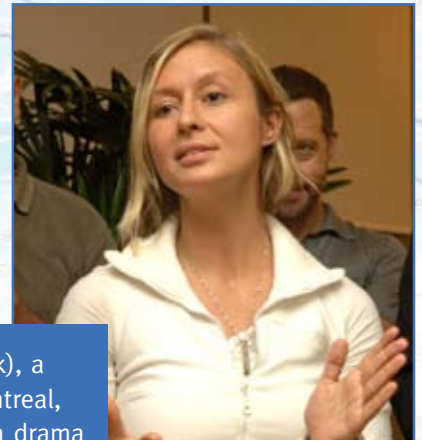
New York City residency,  
September 2006.

**W**hen we inaugurated The International Class three years ago, we were astounded by the talented people who made up our first class. Could we have stumbled across a uniquely innovative grouping of individuals, we wondered? The second year, we were delighted to welcome an equally fascinating group of innovators and activists. Below you'll meet members of our third class: again, wonderful and wonderfully diverse. We're led to think that there are dozens, indeed, thousands of community builders like them who have something important to give the world. Maybe you know such a person or are such a person? Let us know! Applications for the 2007/8 class are now being accepted.

Born in El Salvador and raised in the barrios of Los Angeles, **Ernesto Barahona** turned to the arts and became a fashion designer. He found his true calling as a community activist and organizer. Ernesto now directs outreach and education for **St. John's Well Child & Family Center** and is director of the L.A. chapter of the All Stars Talent Show Network.



**Synthia Borilekic** (Synthia Zbojilek), a film director and writer based in Montreal, is completing her graduate studies in drama therapy at Concordia University. Synthia's latest project is *Ça brime Sabrina*, a short film on the theme of bullying that she wrote, directed and produced with Haitian, Central and South American drama students.



**Dejan Dimitrov** (l.), a medical student from Serbia, works with the Roma (gypsy) Students Association and the "Happy Childhood Organization" to help Roma and other marginalized people lead more dignified lives. His passion is working to create public dialogue on inclusion.



**Powpee Lee** (r.) was born into a farming family in rural Taiwan and was active in the student movement. After college, Powpee became a community organizer – helping to build alliances among trade union laborers and undocumented workers. In 1999, Powpee helped establish Lu-Di Community University for radical adult education and now serves as its director.





*Joan Mahon-Powell and Halim Faisal*

**Halim Faisal** came of age in New York City during the countercultural 1960s. A social worker, he now works for a rural clinic in Georgia, spending his days meeting with people who are dying or are grieving the loss of a loved one or working with young people referred by the court system.



**Diane Holliman** is an Associate Professor of Social Work at **Valdosta State University** in Valdosta, Georgia. A postmodern social worker, her research and teaching interests are hospice care, social work with the elderly, and policy/services in rural areas.

**Loree Lawrence** is a longtime artist, educator and researcher who has worked with community arts initiatives across Canada. Loree has organized “at-risk” young people to create collaborative performances combining theatre, video, music, movement and visual arts. She is the lead installation artist and the youth consultant with the **Jumblies Theatre**, and a principal with Resonance Creative Consulting Partners.



**Syed Mizanur Rahman** is a youth worker and community theatre organizer from Bangladesh. While at Jahangirnagar University studying economics, Syed discovered the power of theatre to motivate. He completed a second Masters in Drama and earned a Diploma in film direction from the National Institute of Film and Fine Arts in India. In 1999, he and some friends established the **Theatre for Research Education and Empowerment**.



*Julie Vaudrin-Charette and baby Theo*

**Julie Vaudrin-Charette** has led participatory drama and media workshops in Senegal, Peru and Malawi. She is interested in exploring theatre as a language to build empathy and community, especially in communities affected by HIV / AIDS. At home in Quebec, she is part of **Vichama Collectif**, a socially engaged multimedia art group.



**Rebecca Widom** is a researcher, program evaluator, advocate and activist currently working on the Homelessness Outreach and Prevention Project at the **Urban Justice Center** in NYC. An innovator in research for social change, her work has drawn attention from policy researchers across the country.

# Joan Mahon-Powell and Michele Senbertrand Co-Chair Psych Out Annual Giving Campaign

**Psych Out**, planned for Monday, February 12, 2007, is an opportunity for friends, old and new, to financially support the Institute's growing international work. Proceeds from this year's benefit will help us reach, train and support more grassroots innovators and social entrepreneurs while expanding our support to colleagues already working with us. To make a contribution, contact Mary Fridley, Sales Director, at 212.941.8906. [mfridley@eastsideinstitute.org](mailto:mfridley@eastsideinstitute.org).



*Institute director Lois Holzman (r.) greets educator Joan Mahon-Powell (l.) and social therapist Michele Senbertrand, R.N. (c.), co-chairs of the Sixth Annual Psych Out Awards benefit, at a reception for donors on September 29.*

## ANNOUNCEMENT & CALL FOR PROPOSALS

# PERFORMING THE WORLD 4

THE PERFORMANCE OF COMMUNITY AND THE COMMUNITY OF PERFORMANCE

FRIDAY, OCTOBER 12 – SUNDAY, OCTOBER 14, 2007

Tarrytown House, Tarrytown, NY

### Convening Committee

- **Dan Friedman** (The Castillo Theatre and Youth OnStage!, NYC)
- **Lois Holzman** (East Side Institute, NYC)
- **Sheila McNamee** (University of New Hampshire, Durham, NH)
- **Fred Newman** (East Side Institute, NYC)

**Performing the World 4** recognizes, celebrates and interrogates the growing global performance movement and its relationship to community building—the thousands of innovative performance projects taking place in urban centers, towns and villages the world over, and the researchers, theoreticians and analysts of what all this ensemble creativity, improvisatory play and “stage-making” might mean for human development, the growth of communities and social change.



*Kitche Magak and Jack Ogembo, colleagues from Maseno University College, near Kisumu, Kenya, take a break on the grounds of the Tarrytown House at the Performing the World 3 Conference in October 2005.*



*An aerial view of the Tarrytown House, a gracious and comfortable conference facility located in the historic Hudson Valley, 25 miles north of New York City.*

The weekend conference will bring together performers, educators, artists, scholars and researchers, psychologists and therapists, health and helping professionals, business professionals, youth workers, social entrepreneurs, activists, and community organizers to showcase innovative practice and scholarship and provide a rich context for learning and performing together.

**For a sampling of conversational themes, panels, workshops and performances go to:** <http://www.eastsideinstitute.org/ptwindex.html>

### DEADLINE FOR PROPOSALS

Proposals are due **March 15, 2007**. Instructions and forms can be viewed and downloaded at <http://www.eastsideinstitute.org/ptw4proposalform.html>

### THE EAST SIDE INSTITUTE FOR GROUP AND SHORT TERM PSYCHOTHERAPY

A CENTER FOR NEW APPROACHES TO HUMAN DEVELOPMENT AND COMMUNITY

#### Executive Staff

Fred Newman, Ph.D.,  
Co-founder and Principal Trainer  
Lois Holzman, Ph.D.,  
Co-founder and Director  
Melissa Meyer,  
Programs Coordinator  
Mary Fridley,  
Director of Development

**The East Side Institute for Group and Short Term Psychotherapy**  
920 Broadway, 14th Floor  
New York, NY 10010

[www.eastsideinstitute.org](http://www.eastsideinstitute.org)  
Tel. 212-941-8906

Editors: Janet Wootten,  
Chris Helm  
Design: Stone DesignWorks  
Photos: Don Pollard,  
Halim Faisal

Please email responses or queries to  
[jwootten@eastsideinstitute.org](mailto:jwootten@eastsideinstitute.org)

The East Side Institute is a non-profit 501(c)(3) organization. We invite you to make tax-deductible contributions to support our International Development Campaign Fund. If you would like to explore opportunities for giving, please contact Mary Fridley, Director of Development, at 212-941-8906 or [mfridley@eastsideinstitute.org](mailto:mfridley@eastsideinstitute.org).